



Nuts, Bolts  
& Washers

For all order enquiries  
call **07 3801 8885**

[temsupplies.com.au](http://temsupplies.com.au)

# Imperial Grade 8 Bolts



Family Code	Description
451	Imperial Grade 8 Hex Bolt Plain
455	Imperial Grade 8 Hex Bolt Zinc-Yellow CR+6
453	Imperial Grade 8 Hex Bolt Zinc-Clear CR+3

## PRODUCT SIZE / RANGE

Diameter	Min. Length	Max Length
1/4"	1/2"	8"
5/16"	1/2"	8"
3/8"	1/2"	10"
7/16"	3/4"	8"
1/2"	3/4"	15"
9/16"	1"	6"
5/8"	1"	16"
3/4"	1"	16"
7/8"	1 1/2"	16"
1"	1 1/2"	16"
1 1/8"	2 1/2"	16"
1 1/4"	2 1/2"	16"
1 3/8"	4"	16"
1 1/2"	3"	16"
1 3/4"	4"	16"
2"	4"	16"



# Imperial Grade 5 Bolts



Family Code	Description
846	Imperial Grade 5 Hex Bolt Plain
847	Imperial Grade 5 Hex Bolt Zinc-Clear CR+3

## PRODUCT SIZE / RANGE

Diameter	Min. Length	Max Length
1/4"	1/2"	6"
5/16"	1/2"	6"
3/8"	1/2"	6"
7/16"	3/4"	6"

**NEW!**

# Metric Class 10.9 Bolts



Family Code	Description
882	Metric 10.9 Hex Bolt / Set Screw Plain Coarse / Fine
466	Metric 10.9 Hex Bolt / Set Screw Zinc-Blue CR+3

## PRODUCT SIZE / RANGE

Diameter	Min. Length	Max Length
M6	10	100
M8	16	150
M10	16	150
M12	20	150
M14	25	120
M16	25	250
M18	40	160
M20	30	250
M24	40	250
M30*	70	450
M36*	90	300

\*Product Family 882 Diameter only M30-M36





# Metric Class 8.8 Bolts / Set Screws



Family Code	Description
880	Metric 8.8 Hex Bolt / Set Screw Plain
470	Metric 8.8 Hex Bolt / Set Screw Zinc-Blue CR+3

## PRODUCT SIZE / RANGE

Diameter	Min. Length	Max Length
M4	8	40
M5	8	80
M6	10	130
M8	10	200
M10	12	220
M12	20	220
M14	25	200
M16	25	300
M18	30	100
M20	30	300
M24	40	300
M30	70	450
M36	90	300

**NEW!**

# Imperial Hex Nuts



## • GRADE 8 FINISHED HEX NUTS

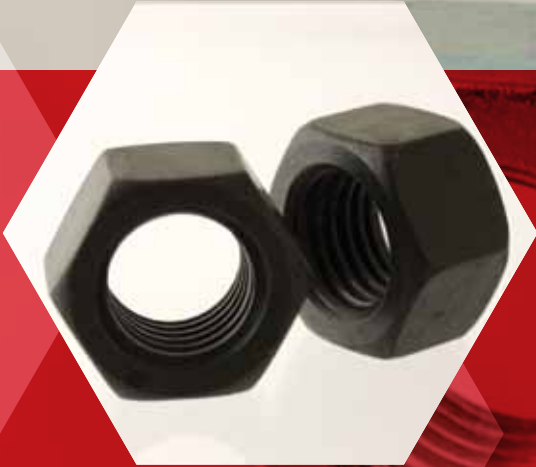
Family Code	Description
308	Imperial Grade 8 Finished Hex Nut Plain
306	Imperial Grade 8 Finished Hex Nut Zinc-Yellow CR+6
328	Imperial Grade 8 Finished Hex Nut Zinc-Clear CR+3

## • GRADE 5 FINISHED HEX NUTS

Family Code	Description
849	Imperial Grade 5 Finished Hex Nut Plain
848	Imperial Grade 5 Finished Hex Nut Zinc-Clear CR+3

## PRODUCT SIZE / RANGE

Min. Diameter	Max Diameter
1/4"	2"



# Metric Hex Nuts



Family Code	Description
309	Metric Class 10 ISO 4032 Hex Nut Zinc-Clear CR+3
316	Metric Class 10 Hex Nut Plain
868	Metric Class 8 Hex Nut Zinc-Clear CR+3
881	Metric Class 8 Hex Nut Plain

## PRODUCT SIZE / RANGE

Min. Diameter	Max Diameter
M3	M36



# Hi-Tensile Locknuts



## • CONE LOCKNUTS

Family Code	Description
826	Metric Class 10 Hex Cone Locknut Zinc Clear & Wax CR+3 DIN 980V
825	Imperial Grade C Hex Cone Locknut Zinc Clear & Wax CR+3

## PRODUCT SIZE / RANGE

Min. Diameter	Max Diameter
M6	M36

Min. Diameter	Max Diameter
1/4"	1"

## • NYLON INSERT LOCKNUTS

Family Code	Description
312	Metric Class 10 Nylon Insert Locknut Zinc-Clear CR+3
828	Imperial Grade C Nylon Insert Locknut Phosphate & Oil
829	Imperial Grade C Nylon Insert Locknut Zinc-Clear CR+3

## PRODUCT SIZE / RANGE

Min. Diameter	Max Diameter
M6	M30

Min. Diameter	Max Diameter
1/4"	1 1/2"



# Thru-Hardened Washers

## • IMPERIAL HARDENED WASHERS

Family Code	Description
375	Imperial SAE Thru-Hardened Flat Washers Plain
383	Imperial SAE Thru-Hardened Flat Washer Zinc-Yellow CR+6
353	Imperial USS Thru-Hardened Flat Washer Zinc-Yellow CR+6 - Large OD
340	Imperial Regular Spring Washer Thru-Hardened Zinc-Yellow CR+6
359	Imperial Regular Spring Washer Thru-Hardened Zinc-Clear CR+3
013	Imperial Hi-Collar Spring Washer Plain

## PRODUCT SIZE / RANGE

Min. Diameter	Max Diameter
#4	2"

## • METRIC HARDENED WASHERS

Family Code	Description
361	Metric Thru-Hardened Spring Washer Zinc-Clear CR+3
371/373	Metric Thru-Hardened Flat Washer Zinc Clear-CR+3
374	Metric Thru-Hardened Flat Washer Plain

## PRODUCT SIZE / RANGE

Min. Diameter	Max Diameter
M5	M36



# L9® Imperial Bolts / Nuts / Washers

Country of Origin: U.S.A.

Family Code	Description
440	Imperial L-9 Hi-Tensile Hex Bolts Zinc-Yellow (U.S.A.)

## PRODUCT SIZE / RANGE

Diameter	Min. Length	Max Length
1/4"	1/2"	3"
5/16"	1/2"	4"
3/8"	1/2"	6"
7/16"	3/4"	6"
1/2"	3/4"	8"
9/16"	1"	4"
5/8"	1"	12"
3/4"	1 1/2"	12"
7/8"	2"	12"
1"	2"	12"
1 1/8"	3"	10"
1 1/4"	3"	12"
1 1/2"	4"	12"

Family Code	Description
444	Imperial L-9 Hex Nut Zinc-Yellow CAD & Wax (U.S.A.)
446	Imperial L-9 Stover Locknut Zinc-Yellow CAD & Wax (U.S.A.)

## PRODUCT SIZE / RANGE

Min. Diameter	Max Diameter
1/4"	1 1/2"

Family Code	Description
448	Imperial L-9 SAE Tension Flat Washer Zinc-Yellow CR+3 (U.S.A.)

## PRODUCT SIZE / RANGE

Min. Diameter	Max Diameter
1/4"	1 1/2"



# High Tensile All Thread Rod



## • METRIC CLASS 8.8 ALL THREADED ROD

Family Code	Description
779	Metric Class 8.8 All Thread Rod Plain DIN 975
780	Metric Class 8.8 All Thread Rod HDG DIN 975

## PRODUCT SIZE / RANGE

Min. Diameter	Max Diameter	Length
M6	M36	1M

## • IMPERIAL GRADE 5 ALL THREADED ROD

Family Code	Description
783	Imperial High Tensile Grade 5 Threaded Rod Plain

## PRODUCT SIZE / RANGE

Min. Diameter	Max Diameter	Length
1/4"	1 1/2"	3'

**NEW!**



# Metric Class 4.6 Bolts / Nuts / Set Screws



Family Code	Description
623	Metric Class 4.6 Set Screw ZINC CR+3 AS 1111
624	Metric Class 4.6 Hex Bolt & Nut ZINC CR+3 AS 1111 / AS 1112
625	Metric Class 4.6 Hex Bolt & Nut HDG AS 1111 / AS 1112
626	Metric Class 4.6 Cup Head Bolt & Nut ZINC CR+3 AS/NZS 1390
627	Metric Class 4.6 Cup Head Bolt & Nut HDG AS/NZS 1390

## PRODUCT SIZE / RANGE

Diameter	Min. Length	Max Length
M6	12	110
M8	12	180
M10	20	300
M12	20	500
M16	25	500
M20	35	500
M24	50	600
M30	75	600
M36	100	600

**NEW!**

**T E M S**

07 3801 8885 | [temsupplies.com.au](http://temsupplies.com.au)





# Metric Class 4.6 Coach Screws



Family Code	Description
628	Metric Class 4.6 Coach Screws ZINC CR+3 AS/NZS 1393
629	Metric Class 4.6 Coach Screws HDG AS/NZS 1393

## PRODUCT SIZE / RANGE

Diameter	Min. Length	Max Length
M6	25	100
M8	30	100
M10	40	150
M12	40	200
M16	50	200
M20	100	200

**NEW!**

# Metric Nuts



## • METRIC CLASS 5 HEX NUTS

Family Code	Description
553	Metric Class 5 Hex Nut Zinc AS 1112
554	Metric Class 5 Hex Nut HDG AS 1112

## PRODUCT SIZE / RANGE

Min. Diameter	Max Diameter
M6	M36

## • METRIC HEX COUPLING NUTS

Family Code	Description
784	Metric Hex Coupling Nut HDG
785	Metric Hex Coupling Nut Zinc Yellow

## PRODUCT SIZE / RANGE

Min. Diameter	Max Diameter
M6	M20

**NEW!**

**T E M S**

07 3801 8885 | [temsupplies.com.au](http://temsupplies.com.au)



# Metric Mild Steel Washers



## • METRIC MILD STEEL FLAT WASHERS

Family Code	Description
366	Metric Flat Washer Mild Steel Zinc CR+3 AS1237
367	Metric Flat Washer Mild Steel HDG AS1237

## PRODUCT SIZE / RANGE

Min. Diameter	Max Diameter
M6	M36

## • METRIC SQUARE WASHERS

Family Code	Description
788	Metric Square Washers HDG
789	Metric Square Washer Zinc Yellow

## PRODUCT SIZE / RANGE

Min. Diameter	Max Diameter
M12	M24

**NEW!**



# Mild Steel Locknuts / Flange Nuts



Family Code	Description
305	Imperial Mild Steel Nylon Insert Locknut Zinc-Clear CR+3

## PRODUCT SIZE / RANGE

Min. Diameter	Max Diameter
#2	2 1/4"

Family Code	Description
555	Metric Serrated Flange Locknut Zinc-Yellow CR+3 DIN 6923

## PRODUCT SIZE / RANGE

Min. Diameter	Max Diameter
M5	M12

Family Code	Description
812	Metric Mild Steel Nylon Insert Locknut Zinc-Clear CR+3

## PRODUCT SIZE / RANGE

Min. Diameter	Max Diameter
M3	M42

**NEW!**

**T E M S**

07 3801 8885 | [temsupplies.com.au](http://temsupplies.com.au)



# Mild Steel All Thread Rod



## • METRIC MILD STEEL ALL THREAD ROD

Family Code	Description
736	Metric Mild Steel Thread Rod HDG Coarse
737	Metric Mild Steel Thread Rod Zinc Coarse

## PRODUCT SIZE / RANGE

Min. Diameter	Max Diameter	Length
M5	M36	1M
M6	M24	3M

## • IMPERIAL MILD STEEL ALL THREAD ROD

Family Code	Description
777	Imperial Mild Steel Thread Rod ZINC BSW

## PRODUCT SIZE / RANGE

Min. Diameter	Max Diameter	Length
1/4"	1"	3"

**NEW!**

# Imperial Stainless Hex Bolts / Set Screws

## • 304

Family Code	Description
400	Imperial Stainless Steel 304 Hex Bolts
864	Imperial Stainless Steel 304 Hex Set Screws

### PRODUCT SIZE / RANGE

Diameter	Min. Length	Max Length
1/4	1/2"	2"
5/16	1/2"	3"
3/8	1/2"	4"
1/2	1"	6"
5/8	1"	4"
3/4	1 1/2"	4 1/2"

## • 316

Family Code	Description
401	Imperial Stainless Steel 316 Hex Bolts
399	Imperial Stainless Steel 316 Hex Set Screws

### PRODUCT SIZE / RANGE

Diameter	Min. Length	Max Length
1/4	1/2"	3"
5/16	1/2"	2 1/2"
3/8	3/4"	4"
1/2	1"	5"
5/8	1"	4"
3/4	1 1/2"	4"
7/8	2"	4"
1	2"	3 1/2"



**NEW!**

**T E M S**

07 3801 8885 | [temsupplies.com.au](http://temsupplies.com.au)



# Metric Stainless Hex Bolts / Set Screws

## • A2-70 (304)

Family Code	Description
830	Metric Hex Bolts / Set Screws Stainless Steel A2-70 (304) DIN 931/933

### PRODUCT SIZE / RANGE

Diameter	Min. Length	Max Length
M3	6	30
M4	6	50
M5	8	60
M6	10	150
M8	12	150
M10	16	250
M12	20	250
M14	25	100
M16	25	200
M18	40	100
M20	30	200
M22	50	80
M24	40	200
M27	60	170
M30	90	90
M33	100	180

## • A4-70 (316)

Family Code	Description
797	Metric Hex Bolt Stainless Steel A4-70 (316) DIN 931
798	Metric Hex Set Screw Stainless Steel A4-70 (316) DIN 933

## • A4-80 (316)

Family Code	Description
794	Metric Hex Bolt Stainless Steel A4-80 (316) DIN 931

### PRODUCT SIZE / RANGE

Diameter	Min. Length	Max Length
M3	6	30
M4	6	50
M5	8	60
M6	10	140
M8	12	150
M10	16	240
M12	20	250
M14	25	100
M16	20	240
M18	40	100
M20	30	300
M22	50	80
M24	40	250
M27	60	170
M30	90	180
M33	100	180
M36	100	250



# Stainless Nuts

## • STAINLESS HEX NUTS

Family Code	Description
762	Imperial Stainless Steel 304 Hex Nuts Passivated
763	Imperial Stainless Steel 316 Hex Nuts Passivated
834	Metric Hex Nut Stainless Steel A2-70 (304)DIN 934
560	Metric Hex Nut Stainless Steel A4-70 (316) DIN 934

### PRODUCT SIZE / RANGE

Min. Diameter	Max Diameter
1/4"	1"
M3	M36

## • STAINLESS WING NUTS

Family Code	Description
567	Metric Stainless Steel 316 Wing Nut

### PRODUCT SIZE / RANGE

Min. Diameter	Max Diameter
M4	M12

## • STAINLESS COUPLING NUTS

Family Code	Description
568	Metric Stainless Steel 316 Coupling Nut

### PRODUCT SIZE / RANGE

Min. Diameter	Max Diameter
M6	M12

## • STAINLESS 316 HALF NUTS

Family Code	Description
562	Metric Stainless Steel 316 Half Nut

### PRODUCT SIZE / RANGE

Min. Diameter	Max Diameter
M6	M24

## • STAINLESS ACORN NUTS

Family Code	Description
569	Imperial Stainless Steel 304 Acorn Nut
566	Metric Stainless Steel 316 Acorn Nut
570	Metric Stainless Steel 304 Acorn Nut

### PRODUCT SIZE / RANGE

Min. Diameter	Max Diameter
1/4"	1/2"
M3	M24





# Stainless Nylon Insert Locknuts



Family Code	Description
310	Imperial Nylon Insert Locknuts Stainless Steel A2-70 (304)
561	Metric Nylon Insert Locknuts Stainless Steel A2-70 (304) DIN 985
563	Metric Nylon Insert Locknuts Stainless Steel A4-70 (316) DIN 985

## PRODUCT SIZE / RANGE

Min. Diameter	Max Diameter
#4	1"

Min. Diameter	Max Diameter
M3	M30



# Imperial Stainless Washers



## • IMPERIAL 304 / 316 FLAT WASHERS

Family Code	Description
757	Imperial Stainless 304 Flat Washer
758	Imperial Stainless 316 Flat Washer

## PRODUCT SIZE / RANGE

Min. Diameter	Max Diameter
1/8"	1 1/2"

## • IMPERIAL 316 SPRING WASHERS

Family Code	Description
755	Imperial Spring Lock Washers Stainless Steel 316 Passivated

## PRODUCT SIZE / RANGE

Min. Diameter	Max Diameter
1/4"	1"

**NEW!**

**T E M S**

07 3801 8885 | [temsupplies.com.au](http://temsupplies.com.au)



# Metric Stainless Washers



## • METRIC 304 / 316 FLAT WASHERS

Family Code	Description
363	Metric Flat Washer A2-70 (304) BBI Standard
369	Metric Flat Washer A2-70 (304) DIN 125A
364	Metric Flat Washer A4-70 (316) BBI Standard

## • METRIC 304 / 316 SPRING WASHERS

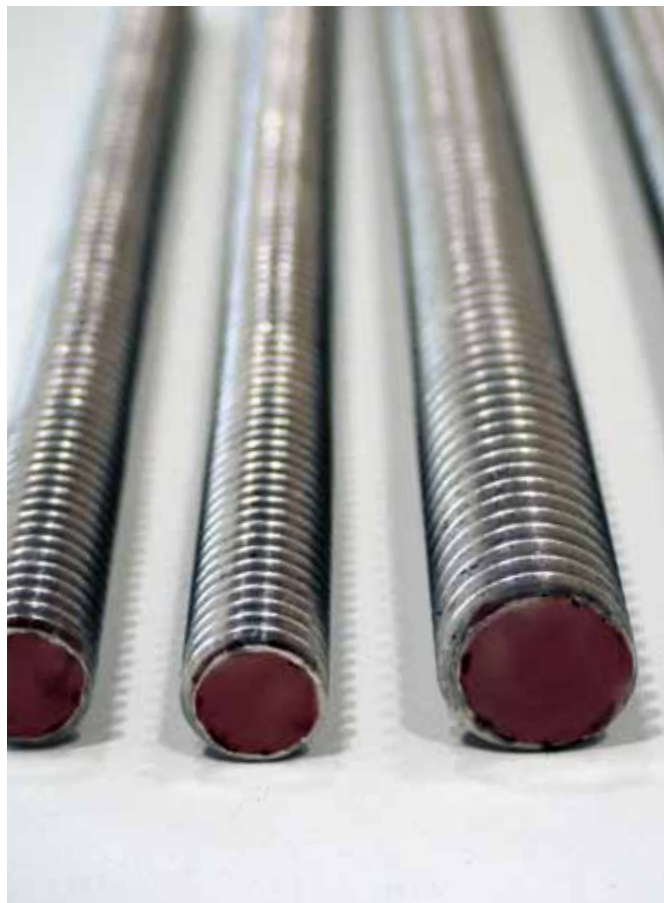
Family Code	Description
836	Metric Spring Washer A2-70 (304)
365	Metric Spring Washer DIN127B A4-70 (316)

## PRODUCT SIZE / RANGE

Min. Diameter	Max Diameter
M3	M36



# Stainless All Thread Rod



## • METRIC STAINLESS ALL THREADED ROD

Family Code	Description
871	Metric Stainless All Thread Rod DIN 975 A2-70 (304)
869	Metric Stainless All Thread Rod DIN 975 A4-70 (316)

## PRODUCT SIZE / RANGE

Min. Diameter	Max Diameter	Length
M4	M36	1M
M10	M16	3M

## • IMPERIAL STAINLESS ALL THREADED ROD

Family Code	Description
886	Imperial Stainless All Thread Rod ASTM F593 (304)

## PRODUCT SIZE / RANGE

Min. Diameter	Max Diameter	Length
1/4"	1"	3"





# Stainless Socket Screws



## • 304 / 316 SOCKET HEAD CAP SCREWS

Family Code	Description
012/592	Imperial Stainless Steel 304 Socket Head Cap Screw
014	Imperial Stainless Steel 316 Socket Head Cap Screw
538	Metric Socket Head Cap Screw Stainless Steel A2-70 (304)
549	Metric Socket Head Cap Screw Stainless Steel A4-70 (316)

## • 304 / 316 COUNTERSUNK SOCKET SCREWS

Family Code	Description
212/712	Imperial Stainless Steel 304 Countersunk Socket Screw
823	Metric Countersunk Socket Screw Stainless Steel A2-70 (304)
862	Metric Countersunk Socket Screw Stainless Steel A4-70 (316)

## • 304 / 316 BUTTON SOCKET SCREWS

Family Code	Description
202/702	Imperial Stainless Steel 304 Button Socket Screw
824	Metric Button Socket Screw Stainless Steel A2-70 (304)
861	Metric Button Socket Screw Stainless Steel A4-70 (316)

# Stainless Grub Screws / Socket Shoulder Screws / Pipe Plugs



## • STAINLESS GRUB SCREWS

Family Code	Description
539	Metric Grub (Socket Set) Screw Cup Point Stainless Steel A2-70 (304)
102/602	Imperial Stainless Steel 304 Grub (Socket Set) Screw Cup Point
104	Imperial Stainless Steel 316 Grub (Socket Set) Screw Cup Point

## • STAINLESS SOCKET SHOULDER SCREWS

Family Code	Description
710	Imperial Stainless Steel 304 Socket Shoulder Screw

## • STAINLESS PIPE PLUGS

Family Code	Description
232	Imperial Stainless Steel 304 Pipe Plugs Dry-Seal 3/4" Taper

# Stainless Cup Head Bolt



## STAINLESS CUP BOLT

Family Code	Description
707	Metric Stainless Steel 316 Cup Head Bolt

## PRODUCT SIZE / RANGE

Diameter	Min. Length	Max Length
M6	20	50
M8	40	70
M10	50	120
M12	50	220

**NEW!**



# Stainless Coach Screws



Family Code	Description
708	Metric Stainless Steel 316 Coach Screw

## PRODUCT SIZE / RANGE

Diameter	Min. Length	Max Length
M6	30	100
M8	30	75
M10	40	150
M12	50	150

**NEW!**

**T E M S**

07 3801 8885 | [temsupplies.com.au](http://temsupplies.com.au)



# Imperial Stainless Self-Tapping Screws



## • 304/316 COUNTER-SUNK HEAD PHILLIPS

Family Code	Description
672	Imperial Stainless Steel 304 Self-Tapping Screws Counter-Sunk Head Phillips
682	Imperial Stainless Steel 316 Self-Tapping Screws Counter-Sunk Head Phillips

## PRODUCT SIZE / RANGE

Diameter	Min. Length	Max Length
4GA	1/4"	1"
6GA	3/8"	2"
8GA	3/8"	3"
10GA	1/2"	3"
12GA	3/4"	3"
14GA	3/4"	3"

## • 304/316 PAN HEAD PHILLIPS

Family Code	Description
678	Imperial Stainless Steel 304 Self-Tapping Screws Pan Head Phillips
683	Imperial Stainless Steel 316 Self-Tapping Screws Pan Head Phillips

## PRODUCT SIZE / RANGE

Diameter	Min. Length	Max Length
4GA	1/4"	1"
6GA	1/4"	2"
8GA	3/8"	3"
10GA	3/8"	3"
12GA	1/2"	3"

**NEW!**

# Metric Stainless Metal Thread Screws



## • 304/316 COUNTER-SUNK HEAD PHILLIPS

Family Code	Description
674	Metric Stainless Steel 304 Metal Thread Screws Counter-Sunk Head Phillips
680	Metric Stainless Steel 316 Metal Thread Screws Counter-Sunk Head Phillips

## PRODUCT SIZE / RANGE

Diameter	Min. Length	Max Length
M3	6mm	40mm
M4	6mm	50mm
M5	8mm	50mm
M6	10mm	50mm
M8	16mm	40mm

## • 304/316 PAN HEAD PHILLIPS

Family Code	Description
676	Metric Stainless Steel 304 Metal Thread Screws Pan Head Phillips
681	Metric Stainless Steel 316 Metal Thread Screws Pan Head Phillips

## PRODUCT SIZE / RANGE

Diameter	Min. Length	Max Length
M3	6mm	50mm
M4	6mm	50mm
M5	8mm	50mm
M6	8mm	75mm
M8	20mm	50mm

**NEW!**

**T E M S**

07 3801 8885 | [temsupplies.com.au](http://temsupplies.com.au)





# Stainless Type 17 Bugle-Batten Screw Hex Drive



## BUGLE-BATTEN SCREW HEX DRIVE

Family Code	Description
679	Imperial Stainless Steel 304 Type 17 Bugle-Batten Screw Hex Drive

## PRODUCT SIZE / RANGE

Diameter	Min. Length	Max Length
14G	50	100

**NEW!**

# Structural Assemblies / Nuts / Washers



## • STRUCTURAL ASSEMBLIES

Family Code	Description
952	Structural Assemblies (B/N/W) CL8.8 HDG AS1252-1983

## PRODUCT SIZE / RANGE

Diameter	Min. Length	Max Length
M12	30	150
M16	40	600
M20	40	600
M24	50	600
M30	75	500
M36	90	500

## • STRUCTURAL NUTS

Family Code	Description
339	Structural Hex Nuts Class 8 HDG / Plain AS1252

## PRODUCT SIZE / RANGE

Min. Diameter	Max Diameter
M12	M36

## • STRUCTURAL WASHERS

Family Code	Description
362	Structural Washers HDG / Plain AS1252

## PRODUCT SIZE / RANGE

Min. Diameter	Max Diameter
M12	M36



# Direct Tension Indicator Washers



## DIRECT TENSION INDICATOR WASHERS

Family Code	Description
786	Direct Tension Indicator Washers HDG

## PRODUCT SIZE / RANGE

Min. Diameter	Max Diameter
M16	M36

**NEW!**



# Metric Socket Head Cap Screws



## • SOCKET HEAD CAPS SCREWS

Family Code	Description
532	Metric Class 12.9 Socket Head Cap Screw Coarse / Fine DIN 912 Plain
876	Metric Class 12.9 Socket Head Cap Screw DIN 912 Zinc-Bake CR+3

## • COUNTERSUNK SOCKET SCREWS

Family Code	Description
534	Metric Class 12.9 Countersunk Socket Cap Screw Plain DIN 7991
878	Metric Class 12.9 Countersunk Socket Cap Screw Zinc-Bake CR+3 DIN 7991

## • BUTTON HEAD SOCKET SCREWS

Family Code	Description
535	Metric 12.9 Button Socket Cap Screw Plain ISO 7380
879	Metric 12.9 Button Socket Cap Screw Zinc-Bake CR+3 ISO 7380

## • LOW HEAD SOCKET CAPS

Family Code	Description
531	Metric Class 10.9 Low Head Socket Cap Screw Plain DIN 7984
571	Metric Class 10.9 Low Head Socket Cap Screw SIP 147 Plain

## PRODUCT SIZE / RANGE

Min. Diameter	Max Diameter
M1.4	M48



# Metric Grub Screws



## • CUP POINT

Family Code	Description
877	Metric Grub (Socket Set) Screw Cup Point 45H Zinc-Bake CR+3 DIN 916

## • KNURLED CUP POINT

Family Code	Description
821	Metric Grub (Socket Set) Screw Knurled Cup Point 45H Plain ISO 4029

## • CONE POINT

Family Code	Description
831	Metric Grub (Socket Set) Screw Cone Point 45H Plain DIN 914

## • DOG POINT

Family Code	Description
833	Metric Grub (Socket Set) Screw Full Dog Point 45H Plain DIN 915

## • FLAT POINT

Family Code	Description
832	Metric Grub (Socket Set) Screw Flat Point 45H Plain DIN 913

Min. Diameter	Max Diameter
M1.4	M30

# Metric Socket Shoulder Screws / Dowel Pins



## • METRIC SOCKET SHOULDER SCREWS

Family Code	Description
537	Metric Class 12.9 Socket Shoulder Screw Plain ISO 7379

## PRODUCT SIZE / RANGE

Diameter	Min. Length	Max Length
M6	10	50
M8	10	70
M10	16	80
M12	12	100
M16	30	120
M20	40	120
M24	50	120

## • METRIC DOWEL PINS

Family Code	Description
536	Metric Dowel Pins Alloy DIN 6325
548	Metric Dowel Pins Alloy Pull-Out DIN 7979

## PRODUCT SIZE / RANGE

Min. Diameter	Max Diameter
M3	M25



# Imperial Socket Head Cap Screws



Family Code	Description
011/581	Imperial Socket Head Cap Screw Plain
872	Imperial Socket Head Cap Screw Zinc-Bake CR+3
307	Imperial Socket Head Cap Screw Plain (1936 Series)
813	Imperial Socket Head Cap Screw Plain (BSW)
019	Imperial Low Head Socket Cap Screw Plain

## PRODUCT SIZE / RANGE

Diameter	Min. Length	Max Length
#0	1/16	1
#1	1/8	1/4
#2	3/32	1 1/2
#3	1/8	2
#4	1/8	2 1/2
#5	1/8	3
#6	1/8	3
#8	1/8	4
#10	3/16	6
#12	3/8	2 1/2
1/4	3/16	8
5/16	1/4	10
3/8	3/8	10
7/16	1/2	6
1/2	3/8	16
9/16	1	8
5/8	5/8	16
3/4	3/4	20
7/8	1 1/4	20
1	1 1/2	20
1 1/8	2	16
1 1/4	2	20
1 3/8	3	20
1 1/2	2 1/2	20
1 3/4	3	20
2	3	20
2 1/2	6	12

# Imperial Countersunk Socket Cap Screws



Family Code	Description
211/721	Imperial 12.9 Countersunk Socket Cap Screw Plain
875	Imperial Countersunk Socket Cap Screw Zinc-Bake CR+3

## PRODUCT SIZE / RANGE

Diameter	Min. Length	Max Length
#0	1/8	1
#1	1/8	1
#2	1/8	1
#3	3/16	1
#4	3/16	1 1/4
#5	3/16	1 1/2
#6	3/16	3
#8	1/4	2 1/2
#10	1/4	3
#12	1/2	1
1/4	3/8	4
5/16	3/8	4
3/8	3/8	6
7/16	3/4	4
1/2	3/4	8
5/8	1	8
3/4	1	8
7/8	2	8
1	2	8
1 1/4	3	8



# Imperial Button Head Socket Cap Screws



Family Code	Description
201/701	Imperial Button Socket Cap Screw Plain
874	Imperial Button Socket Cap Screw Zinc-Bake CR+3
817	Imperial Button Socket Cap Screw BSW Plain

## PRODUCT SIZE / RANGE

Diameter	Min. Length	Max Length
#0	1/8	1
#1	1/8	1
#2	1/8	1
#3	3/16	1
#4	1/8	1
#5	1/4	1 1/2
#6	1/8	3
#8	3/16	2
#10	1/4	3
1/4	1/4	4
5/16	3/8	4
3/8	3/8	5
1/2	3/4	4
5/8	1	4



# Imperial Grub Screws



## • CUP POINT

Family Code	Description
101/601	Imperial Grub (Socket Set) Screw Cup Point Plain
873	Imperial Grub (Socket Set) Screw Cup Point Zinc-Bake CR+3
922	Imperial Grub (Socket Set) Screw Cup Point BSW Plain

## • KNURLED CUP

Family Code	Description
111	Imperial Grub (Socket Set) Screw Knurled Cup Point Plain

## • CONE POINT

Family Code	Description
121/604	Imperial Grub (Socket Set) Screw Cone Point Plain

## • OVAL POINT

Family Code	Description
131/605	Imperial Grub (Socket Set) Screw Oval Point Plain

## • HALF DOG

Family Code	Description
141/606	Imperial Grub (Socket Set) Screw 1/2 Dog Point Plain

## • FULL DOG

Family Code	Description
607	Imperial Grub (Socket Set) Screw Full Dog Point Plain

## • FLAT POINT

Family Code	Description
151/603	Imperial Grub (Socket Set) Screw Flat Point Plain

## PRODUCT SIZE / RANGE

Diameter	Min. Length	Max Length
#0	1/16	1/2
#1	1/16	1/2
#2	1/16	3/4
#3	1/16	5/8
#4	1/16	1
#5	3/32	1
#6	3/32	2
#8	1/8	2
#10	1/8	3
#12	3/16	1
1/4	3/16	3
5/16	1/4	3
3/8	1/4	4
7/16	3/8	4
1/2	3/8	6
9/16	1/2	1 1/2
5/8	1/2	6
3/4	5/8	6
7/8	7/8	6
1	1	6
1 1/8	1	3
1 1/4	1	4
1 1/2	1 1/2	4



# Imperial Socket Shoulder Screws



Family Code	Description
221/711	Imperial Socket Shoulder Screw Plain
853	Imperial Socket Shoulder Screw Plain BSW

## PRODUCT SIZE / RANGE

Diameter	Min. Length	Max Length
1/4	1/4	4
5/16	1/4	4
3/8	1/4	6
1/2	3/8	8
5/8	1/2	8
3/4	1/2	7
1	1	7
1 1/4	2 1/4	6

# Imperial Dowel Pins



Family Code	Description
241	Imperial Dowel Pins Alloy
261	Imperial Dowel Pins Alloy PullOut
251	Imperial Dowel Pins Alloy Oversize

## PRODUCT SIZE / RANGE

Diameter	Min. Length	Max Length
1/16	3/16	1
3/32	3/16	1 1/8
1/8	1/4	2
3/16	3/8	3
1/4	3/8	4
5/16	1/2	4
3/8	1/2	4
7/16	1	3
1/2	3/4	4
5/8	1	5
3/4	2	6
7/8	2	6
1	2	6



# Pressure Plugs



Family Code	Description
229	Metric Taper Pressure Plugs Class 5.8 DIN 906

## PRODUCT SIZE / RANGE

Min. Size	Max Size
M8	M22

Family Code	Description
231	Imperial Taper Pressure Plugs Alloy Dry-Seal 3/4" Taper Black Oxide
233	Imperial Taper Pressure Plugs Alloy Flush-Seal 7/8" Taper Black Oxide
230	Imperial Taper Pressure Plugs Brass Dry-Seal 3/4" Taper
822	Imperial Taper Pressure Plugs Alloy BSPT

## PRODUCT SIZE / RANGE

Min. Size	Max Size
1/16	2

# Square Head Set Screws



Family Code	Description
409/411	Imperial Square Head Set Screws Cup Point Case Hardened

## PRODUCT SIZE / RANGE

Diameter	Min. Length	Max Length
1/4	3/8	6
5/16	1/2	6
3/8	1/2	8
7/16	3/4	6
1/2	5/8	10
9/16	1	4
5/8	3/4	10
3/4	1	12
7/8	2	12
1	2	12
1 1/8	2	12
1 1/4	2	12
1 3/8	2	12
1 1/2	2	12

# Metric / Imperial Hexagon Wrenches



## • SHORT ARM

Family Code	Description
511	Imperial Hex Keys CRV-6150 Short Arm
513	Metric Hex Keys Alloy CRV-6150 Short Arm

## • LONG ARM

Family Code	Description
512	Imperial Hex Keys CRV-6150 Long Arm
514	Metric Hex Keys Alloy CRV-6150 Long Arm

## • HEX WRENCH SETS

Family Code	Description
527	Metric/ Imperial Hex Key Sets

## PRODUCT SIZE / RANGE

	Min. Diameter	Max Diameter
Short Arm Metric	1.3mm	10mm
Short Arm Imperial	1/16	3/8
Long Arm Ball End Metric	1.5mm	8mm
Long Arm Ball End Imperial	1/16	3/8