



Gas Nailing Systems

For all order enquiries
call **07 3801 8885**

temsupplies.com.au



GAS FASTENING SYSTEMS ARE NOW UTILISED BY MANY CONSTRUCTION PROFESSIONALS FOR A WIDE RANGE OF APPLICATIONS AS THEY ARE FAST AND EASY TO USE.

- The ICCONS® GT Gas Tool system is the result of extensive R&D and Global testing and delivers the best overall Gas tool system in today's market.
- Taking the most important design features that cover functionality, ergonomics and durability the ICCONS® GT Gas System provides the Contractor with a quality, versatile and reliable system at a highly competitive price point.

- The GT system is ideal for use in many fixing applications in the building services sector whether it's commercial, civil, industrial or domestic construction disciplines. The ICCONS® GT range of Gas Tools will assist with many fastening applications that have traditionally been done by labour intensive drilled in anchoring or expensive PAT systems.

GT Applications

- Direct Fixing to Metal Stud Partitioning, Floors, Walls and Ceilings
- Furring Channel Clips
- Angle Clips for ceiling rod suspension systems
- Fire Rated Angle Clips for fire rated cabling
- Insulation Fasteners (GTI-140C only)

THE FEATURE AND BENEFIT STORY

- The GT system does not require a license to operate and is considerably quieter than all other major fixing methods where noise may be a concern (hospitals for example).
- The GT Short Track holds 30 pins in the magazine track but is still small enough to work overhead in applications where access may be problematic.
- By attaching the GT Pole Tool that can be purchased in different length sections, exact floor to ceiling height distance is achieved so fastening can be done ergonomically from a floor standing position.
- The versatile ICCONS® GT system is the most flexible cost effective gas fixing system in the market place.



GT-6 Gas Tool

Long & Short Track



Part No.	Description	qty
GT-6	Long track 40 pin magazine capacity	1
GT-6ST	Short track 30 pin magazine capacity	1



GT-6 Pin & Fuel Cell

Standard pin (also fits ICONS® GT3 Tools)

NEW



Part No.	Description	qty	qty
GT6-20	20mm - Pin & Fuel Cell	1000	5000
GT6-25	25mm - Pin & Fuel Cell	1000	5000
GT6-35	35mm - Pin & Fuel Cell	1000	5000



GT-6 HC Ballistic Point Pin

Hardened Pin For Hard Substrates (also fits ICONS® GT3 Tools)

NEW



Part No.	Description	qty	qty
GT6-HC15	15mm - ballistic point pin (for steel) & Fuel Cell	1000	5000
GT6-HC17	17mm - ballistic point pin (for Steel & hard concrete) & Fuel Cell	1000	5000
GT6-HC22	22mm - ballistic point pin (for Steel & hard concrete) & Fuel Cell	1000	5000



GT-6, GT-3 & GTI-140C Fuel Cell

Fuel Cell only



Part No.	Description	qty	qty
GT-3FUEL	GT Fuel Cell only	1	n/a



NEW

apolo GTMAC Metal Angle

Fits ICONS® GT-6 Tools & Powers® C5



Part No.	Description	qty	qty
GTMAC-FR	Fire Rated - Metal Angle Clip for GT-6 Tools	100	900



GT Extension Pole (6 Foot)



Part No.	Description	qty
GT-POLE4	6' Pole Tool kit (Includes Handle, head and 280mm, 580mm & 690mm pole extensions)	1
Accessories		
GT-POLE1	Extension Pole (280mm)	1
GT-POLE2	Extension Pole (580mm)	1
GT-POLE3	Extension Pole (690mm)	1



GT-3 Gas Tool

Long & Short Track



Part No.	Description	qty
GT-3	Long track 40 pin magazine capacity	1
GT-3ST	Short track 30 pin magazine capacity	1
GT-3BH	GT 3 Belt Hook	1

GT Extension Pole (6 Foot)



Part No.	Description	qty
GT-POLE4	Pole Tool kit (Includes Handle, head and 280mm, 580mm & 690mm pole extensions)	1
Accessories		
GT-POLE1	Extension Pole (280mm)	1
GT-POLE2	Extension Pole (580mm)	1
GT-POLE3	Extension Pole (690mm)	1



GT-3 Pin & Fuel Cell

Pin & Fuel Cell

Part No.	Description	qty	qty
GT13	13mm - Pin & Fuel Cell	1000	5000
GT19	19mm - Pin & Fuel Cell	1000	5000
GT25	25mm - Pin & Fuel Cell	1000	5000
GT32	32mm - Pin & Fuel Cell	1000	5000
GT38	38mm - Pin & Fuel Cell	1000	5000

GT3 consumables to be replaced with GT6 consumable once GT3 consumables depleted (refer page 85 for GT-6 range)



GT-3 Ballistic Point Pin

For Hard Concrete

Part No.	Description	qty	qty
GTHC17	17mm - ballistic point pin (for hard concrete) & Fuel Cell	1000	5000
GTHC22	22mm - ballistic point pin (for hard concrete) & Fuel Cell for hard concrete	1000	5000



GT-6 & GT-3 Fuel Cell

Fuel Cell only



Part No.	Description	qty	qty
GT-3FUEL	GT Fuel Cell only	1	n/a



GT-3 Metal Angle Clip

Fits ICONS® GT-3 Tools

Part No.	Description	qty	qty
GTMAC	Metal Angle Clip for GT-3 Tools (use with GTMAC-ADAPTOR)	100	800
GTMAC-ADAPTOR	GT-3 Magnetic adaptor for use with GTMAC Metal Angle Clip	1	n/a



GT-3 Metal Washers & Adaptor

Fits ICONS® GT-3 Tools

Part No.	Description	qty	qty
GTW14	14mm O.D Metal Washer for GT-3 Tools (use with GTW14-ADAPTOR)	250	5000
GTW14-ADAPTOR	GT-3 Magnetic Adaptor for use with 14mm O.D metal washer	1	n/a
GTW25	25mm O.D Metal Washer for GT-3 Tools (use with GTW25-ADAPTOR)	250	5000
GTW25-ADAPTOR	GT-3 Magnetic Adaptor for use with 25mm O.D metal washer	1	n/a



GT3CTM



GT5CTM

apolo Cable Tie Mount

Apolo Cable Tie Mounts suitable for use with GT-3 & GT6 Gas Tool



Part No.	Description	Colour	qty	qty
GT3CTM	Cable Tie Mount (9TBB GT3CTM) for GT3 tools	Black	100	900
GT5CTM	Cable Tie Mount (9NTBB GT5CTM) for GT6 & Powers® C5 Tools	Grey	100	900



Contractors Pack Option 1

Consists of:



Part No.	Description	qty	qty
GT3-CTP1	Contractors Pack Option 1 - GTHC22 x 1000 pins & gas / GT3CTM x 1000 mounts / GTCT200 x 1000 ties	1	n/a

* Other combinations are available on request



Cable Tie 180mm x 4.5mm

NEW

Part No.	Description	qty	qty
GTCT200	Cable Tie 180mm x 4.5mm Black	100	n/a



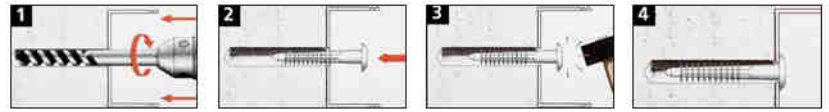
- Quick installation, good grip
- Ideal for electrical applications such as cable channels, junction boxes, etc.

apolo MAS Nylon Plug

Nylon plug direct fixing



NEW



Part No.	Description	mm	mm	qty	qty
GTMAS06040	6 x 40mm Nylon Plug (91640MAS)	6	32	200	1800



apolo Conduit Saddle

Suitable for use with GT-3 & GT6 Gas Tools



Metal - GTMT25 Fire Rated



Part No.	Part No.	Description	mm	qty	qty
GTPVC16		16mm PVC Single Conduit Saddle (FP16)	16	100	600
GTPVC20		20mm PVC Single Conduit Saddle (FP20)	20	100	600
GTPVC25		25mm PVC Single Conduit Saddle (FP25)	25	100	600
	GTMT25	25mm Metal Single Conduit Saddle (FT-25) - Fire Rated	25	100	900



apolo Quick Clip Self Locking Polyamide Pipe Clamp



Suitable for use with GT-3 & GT6 Gas Tools or with Apolo Channel Strut systems.



Part No.	Description	mm	qty	qty
GTQC14-18	Quick Clip Polyamide Self Locking Pipe Clamps (ABT18)	14-18	100	600
GTQC20-25	Quick Clip Polyamide Self Locking Pipe Clamps (ABT25)	20-25	50	450
GTQC26-32	Quick Clip Polyamide Self Locking Pipe Clamps (ABT32)	26-32	50	300
GTQC35-42	Quick Clip Polyamide Self Locking Pipe Clamps (ABT42)	35-42	25	150



apolo Channel Strut for Quick Clip System



Part No.	Description	mm	mm	Metre	qty	qty
CSPVC	PVC Channel Strut for Quick Clip System (P1000PVC)	25	11	1	1	30
CSM	Metal Channel Strut for Quick Clip System (2000PC)	20	8	2	1	24



GTI-140C

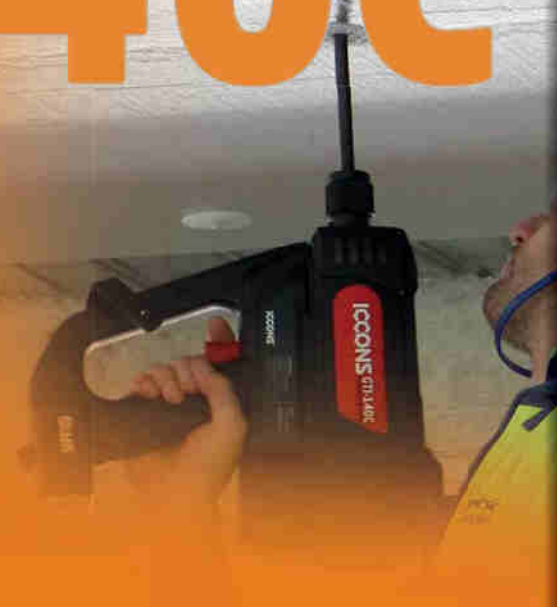
- **Lighter**
- **Quieter**
- **Faster**
- **Safer**
- **Value**

Gas Operation

Powerful 90Joules

Compact Design

Suits Insulation 25-120mm



NEW COMPACT INSULATION FASTENING TOOL



GTI-140C Insulation Gas Tool

Compact Gas Operated tool for shooting insulation washers

FEATURES

- For all types of insulation fixing
- Quick and easy insulation fixing
- Fixing on hollow brick without damage to the base material
- PAT replacement
- Durable Fuel Cell



Part No.	Description	qty
GTI-140C	Compact Insulation Tool - Concrete Gas Nailer	1



GTI-140C GT-6 & GT-3 Fuel Cell

Fuel Cell only



Part No.	Description	qty	qty
GT-3FUEL	GT Fuel Cell only	1	n/a



GTI-140C Insulation Fasteners

For GTI-140C Gas nailer



Part No.	Description	mm	qty	qty
GTIF025	Insulation Fastener with drive pin for 25mm insulation	25	50	1000
GTIF030	Insulation Fastener with drive pin for 30mm insulation	30	50	1000
GTIF035	Insulation Fastener with drive pin for 35mm insulation	35	50	1000
GTIF040	Insulation Fastener with drive pin for 40mm insulation	40	50	1000
GTIF050	Insulation Fastener with drive pin for 50mm insulation	50	50	900
GTIF060	Insulation Fastener with drive pin for 60mm insulation	60	50	800
GTIF075	Insulation Fastener with drive pin for 75mm insulation	75	50	600
GTIF080	Insulation Fastener with drive pin for 80mm insulation	NEW 80	50	600
GTIF090	Insulation Fastener with drive pin for 90mm insulation	NEW 90	50	600
GTIF100	Insulation Fastener with drive pin for 100mm insulation	100	50	500
GTIF120	Insulation Fastener with drive pin for 120mm insulation	120	50	400



GT Extension Pole (6 Foot)



Part No.	Description	qty
GT-POLE4	6' Pole Tool kit (Includes Handle, head and 280mm, 580mm & 690mm pole extensions)	1
Accessories		
GT-POLE1	Extension Pole (280mm)	1
GT-POLE2	Extension Pole (580mm)	1
GT-POLE3	Extension Pole (690mm)	1



SYMPAFIX® GT-C5 Standard Pins & Fuel Cell



For use in Powers® C5 Tool



Part No.	Description	mm	mm	qty	qty
GT5-20	C5 PIN & Fuel Cell Combo 20MM (70086)	20	2.6	800	4000



SYMPAFIX® GT-C5 Extra Hard Pins & Fuel Cell



For use in Powers® C5 Tool

GT5-17HC	C5 Pin & Fuel Cell Combo 17MM Hard Concrete (17XH - 70096)	17	3.0	800	4000
GT5-22HC	C5 PIN & Fuel Cell Combo 22MM Hard Concrete (22XH - 70100)	22	3.0	800	4000



SYMPAFIX® GT-C5 Fuel Cell



For use in Powers® C5 Tool



Part No.	Description	qty	qty
GT-5FUEL	GT-5 Fuel Cell (70082)	20	80



apolo GT-C5 Cable Tie Mounts



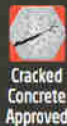
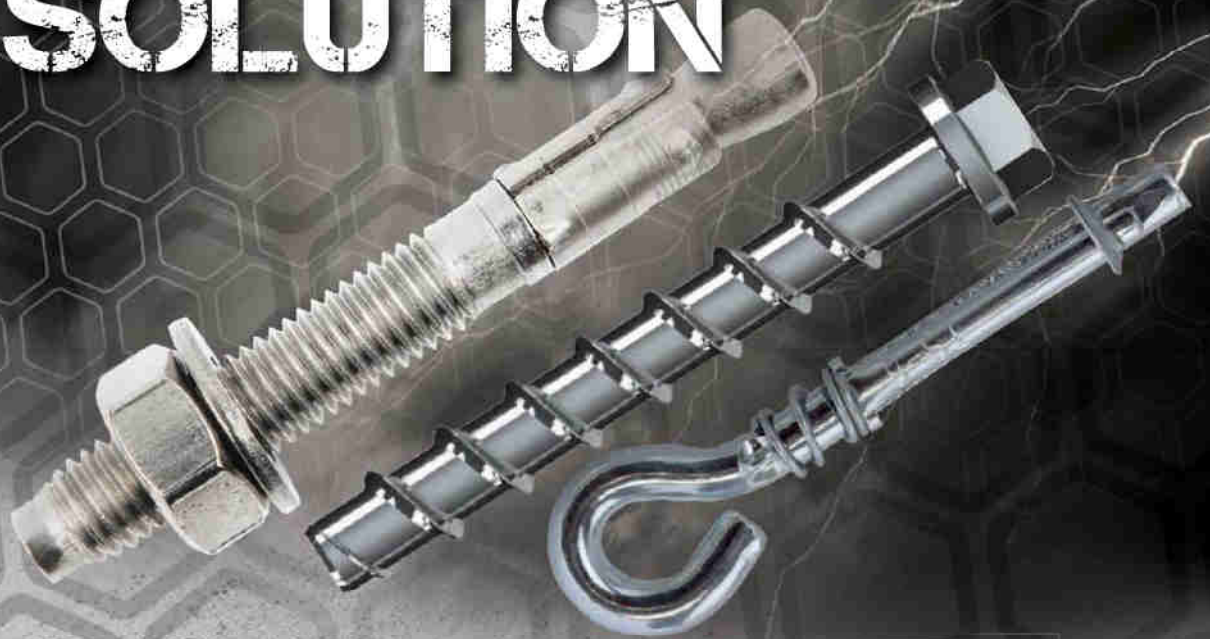
For use in Powers® C5 Tool



Part No.	Description	qty	qty
GT5CTM	GT-5 Cable Tie Mounts (9NTBB)	100	900



EVERY SOLUTION



SERVICE
ICCONS COMMERCIAL ENGINEERING

SA TS 101:2015 - the new Standards Australia Technical Specification for Post-Installed Fasteners is NOW referenced in the 2016 NCC
Complying with the 2016 National Construction Code is Law!

The highly experienced team at ICCONS® has a proven track-record with decades of construction product knowledge and engineering expertise. ICCONS® next generation Code Compliant anchoring solutions, takes safety, design flexibility and performance of fasteners to new heights! You are invited to explore ICCONS® Design Fix - a FREE software download - making fastener selection and code compliant design easy. ICCONS® covers every fastening job - big or small!

FOR DETAILED TECHNICAL INFORMATION YOU CAN CONTACT US ON:

03 9706 4344 @ engineering@iccons.com.au www.iccons.com.au www.facebook.com/icconsptyltd



DURABILITY:

Resilient Light Weight One Piece Engineered housing made from glass reinforced Nylon 6.

ACCURACY:

Easy Adjust Power Dial regulates nail penetration.

RELIABILITY:

Simple design allows a fast dismantle / reassemble procedure for easy cleaning and maintenance

VERSATILITY:

Fastener designed to accept PX nails up to 75mm , and a variety of clip assemblies.



POWERFUL SEMI-AUTOMATIC:

Accepts .27 Caliber 10 charge safety strip.

COMFORT:

Contoured Shock Absorbing Rubber Grip reduces operator fatigue.

SAFETY:

2 stage trigger - tool has to be depressed against base material before it will activate.

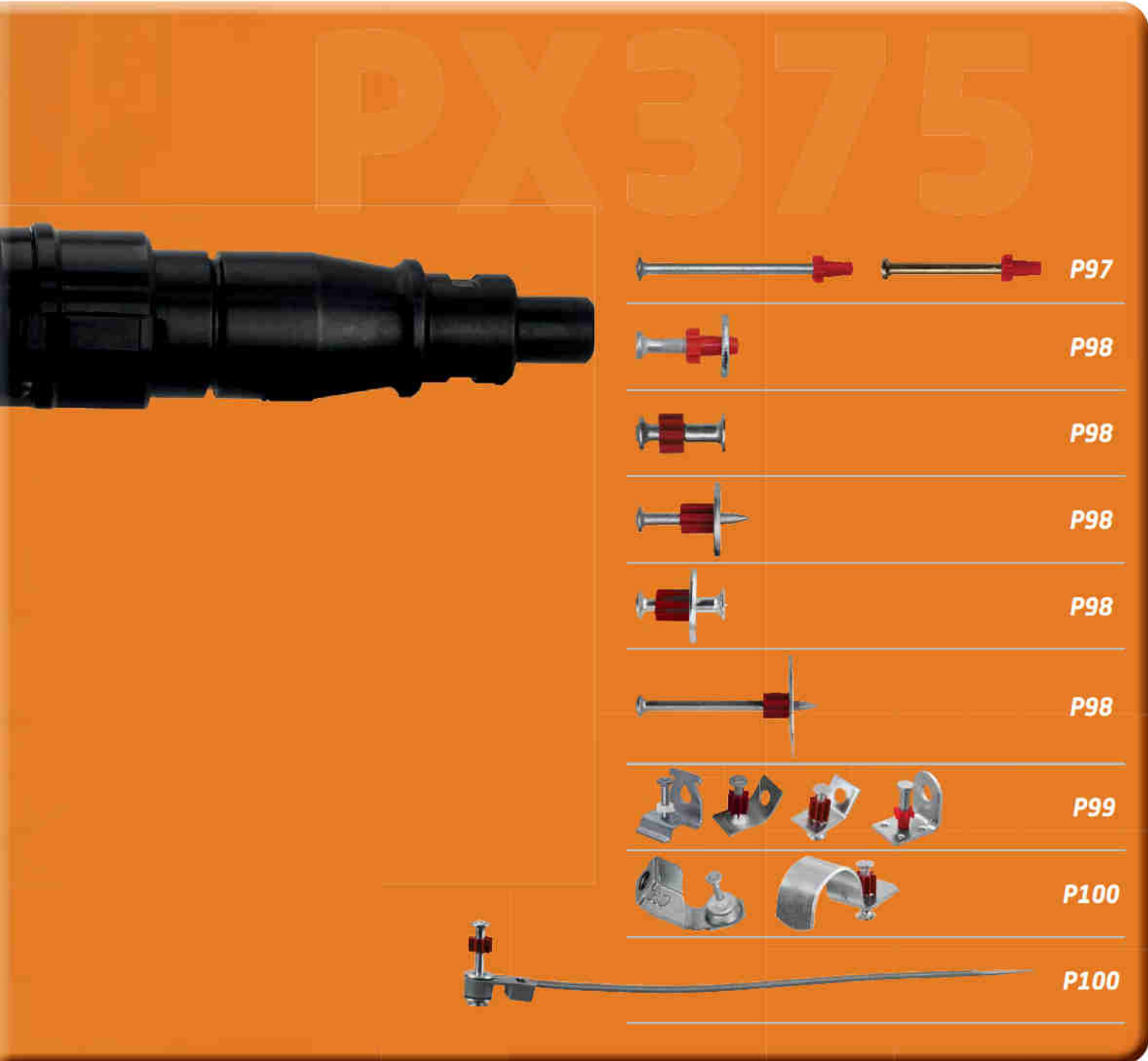
SECURE:

Tough moulded lockable case with compartments to store your charges , safety glasses and cleaning equipment



PX375 Powder Actuated Tool

.27 caliber low velocity semi automatic tool up to 75mm nails



-  **P97**
-  **P98**
-  **P98**
-  **P98**
-  **P98**
-  **P98**
-  **P99**
-  **P100**
-  **P100**



Part No.	Description	qty
PX375	Powder Actuated Tool - .27 caliber low velocity semi automatic tool up to 75mm nails	1
PX350-CLEANINGKIT	Cleaning Kit for PX375	1

* Not suitable for PX60M Tools



PXC - Collated Drive Pin - 8mm Head

For use with ICCONS® PX60M (magazine) (PX60M will need to 1 x rubber spring / 500 nails)
Also Suits most brands with magazine attachment, suitable for 8mm barrel.

NEW
100 PCE Boxes



Part No.	Description	mm	mm	mm	qty	qty
PXC16M	16mm Collated 10 strip Drive Pin	8	16	3.8	100	1600
PXC19M	19mm Collated 10 strip Drive Pin		19	3.8	100	1600
PXC27M	27mm Collated 10 strip Drive Pin		27	3.8	100	1600
PXC32M	32mm Collated 10 strip Drive Pin		32	3.8	100	1600
PXC37M	37mm Collated 10 strip Drive Pin		37	3.8	100	1600
PXC42M	42mm Collated 10 strip Drive Pin		42	3.8	100	1600
PXC52M	52mm Collated 10 strip Drive Pin		52	3.8	100	1600
PXC62M	62mm Collated 10 strip Drive Pin		62	3.8	100	1600
PXC72M*	72mm Collated 10 strip Drive Pin		72*	3.8	100	1600

* Not suitable for PX60M Tools



PX9C - Collated Drive Pin - 9mm Head With Rubber Spring

Suitable for Ramset® FrameBoss™ Tools, & Powers® P3X

NEW



Part No.	Description	mm	mm	mm	qty	qty
PX9C20MRS	20mm Collated 10 strip Drive Pin with Rubber Spring	9	20	3.7	500	2500
PX9C50MRS	50mm Collated 10 strip Drive Pin with Rubber Spring		50	3.7	300	1500
PX9C60MRS	60mm Collated 10 strip Drive Pin with Rubber Spring		60	3.7	300	1500
PX9C75MRS	75mm Collated 10 strip Drive Pin with Rubber Spring		75	3.7	300	1500

PX - Rubber Spring

Suitable for use with ICCONS® PX60M & Ramset® FrameBoss™ Tools



Part No.	Description	qty	qty
PXMRS	Rubber Spring	1	n/a



PXS - Drive Pin - 8mm Head

For use with ICCONS® PX350, PX375 & PX60M Tools (single shot).

Suits most brands of low velocity powder actuated tools.



Part No.	Description	mm	mm	mm	qty	qty
PXS16	16mm Drive Pin	8	16	3.7	100	3200
PXS19	19mm Drive Pin		19	3.7	100	3200
PXS25	25mm Drive Pin		25	3.7	100	3200
PXS32	32mm Drive Pin		32	3.7	100	1600
PXS38	38mm Drive Pin		38	3.7	100	1600
PXS45	45mm Drive Pin		45	3.7	100	1600
PXS50	50mm Drive Pin		50	3.7	100	1600
PXS57	57mm Drive Pin		57	3.7	100	1600
PXS60	60mm Drive Pin		60	3.7	100	1600
PXS65	65mm Drive Pin		65	3.7	100	1600
PXS70	70mm Drive Pin		70	3.7	100	800
PXS75	75mm Drive Pin		75	3.7	100	800
*PXS99	100mm Drive Pin		100	3.7	100	800

NEW

* Not suitable for PX350, PX375 or PX60M tools, - Suitable for Ramset® FrameBoss™



PXSC - Ballistic Point - 8mm Head

Ballistic Point for Hard Concrete & Steel

For use with ICCONS® PX350, PX375 & PX60M Tools (single shot).

Suits most brands of low velocity powder actuated tools.



Part No.	Description	mm	mm	mm	qty	qty
PXSC50	50mm Ballistic Stepped point Drive Pin	8	50	4	100	1600
PXSC60	60mm Ballistic Stepped point Drive Pin		60	4	100	1600
PXSC75	75mm Ballistic Stepped point Drive Pin		75	4	100	800



PHV Drive Pin - 6mm Head

High Velocity

Suits most brands of high velocity powder actuated tools



Part No.	Description	mm	mm	mm	qty	qty
PHV50	50mm x 6mm Head - Drive Pin	6	50	3.7	100	1600
PHV65	65mm x 6mm Head - Drive Pin		65	3.7	100	1600
PHV75	75mm x 6mm Head - Drive Pin		75	3.7	100	1600
PHV90	90mm x 6mm Head - Drive Pin		90	3.7	100	1600



NEW

PXSCW - Cane Bin Washer Pin

For use with ICONS® PX350, PX375 & PX60M Tools (single shot)

Suits most brands of low velocity powder actuated tools.



Part No.	Description	mm	mm	mm	qty	qty
PXSCW25	25mm Ballistic Point Drive Pin with 16mm washer	8	25	3.7	100	800



PXTH - Top Hat Assembly

For use with ICONS® PX350, PX375 & PX60M Tools (single shot)

Suits most brands of low velocity powder actuated tools.



Part No.	Description	mm	mm	mm	qty	qty
PXTH16	16mm Drive Pin with Top Hat Assembly	8	16	3.7	100	3200
PXTH19	19mm Drive Pin with Top Hat Assembly		19	3.7	100	3200
PXTH25	25mm Drive Pin with Top Hat Assembly		25	3.7	100	3200



PXW - Metal Washer Assembly

For use with ICONS® PX350, PX375 & PX60M Tools (single shot)

Suits most brands of low velocity powder actuated tools.



Part No.	Description	mm	mm	mm	mm	qty	qty
PXW25	25mm Drive Pin with 22mm Washer	8	25	3.7	22	100	800
PXW32	32mm Drive Pin with 22mm Washer		32	3.7	22	100	800
PXW38	38mm Drive Pin with 22mm Washer		38	3.7	22	100	800



PXWTH - Metal Washer with Top Hat

For use with ICONS® PX350, PX375 & PX60M Tools (single shot)

Suits most brands of low velocity powder actuated tools.



Part No.	Description	mm	mm	mm	mm	qty	qty
PXWTH20	20mm Drive Pin with 22mm Washer	8	20	3.7	22	100	800
PXWTH25	25mm Drive Pin with 22mm Washer		25	3.7	22	100	800
PXWTH30	30mm Drive Pin with 22mm Washer		30	3.7	22	100	800



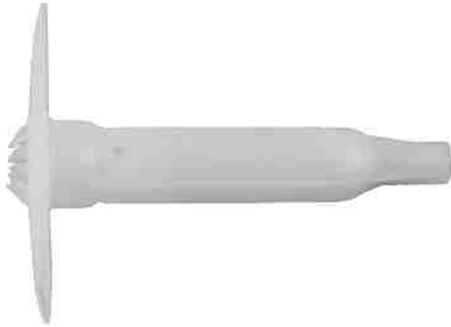
PXIW - Metal Insulation Washer

For use with ICONS® PX350, PX375 & PX60M Tools (single shot)

Suits most brands of low velocity powder actuated tools.



Part No.	Description	mm	mm	mm	mm	qty	qty
PXIW38	38mm Drive Pin with 36mm Insulation washer	8	38	3.7	36	100	400
PXIW65	65mm Drive Pin with 36mm Insulation washer		65	3.7	36	50	200



PXIF - Insulation Fasteners

Suits most brands of low velocity powder actuated tools fitted with an insulation fastener adaptor

Part No.	Description			
		mm	qty	qty
PXIF025	Insulation Fastener with 37mm Drive Pin for 25mm insulation	25	300	n/a
PXIF030	Insulation Fastener with 42mm Drive Pin for 30mm insulation	30	300	n/a
PXIF035	Insulation Fastener with 42mm Drive Pin for 35mm insulation	35	300	n/a
PXIF040	Insulation Fastener with 52mm Drive Pin for 40mm insulation	40	300	n/a
PXIF050	Insulation Fastener with 52mm Drive Pin for 50mm insulation	50	300	n/a
PXIF060	Insulation Fastener with 52mm Drive Pin for 60mm insulation	60	200	n/a
PXIF075	Insulation Fastener with 52mm Drive Pin for 75mm insulation	75	200	n/a
PXIF100	Insulation Fastener with 52mm Drive Pin for 100mm insulation	100	200	n/a



PXCC - Angle Clip

For use with ICCONS® PX350, PX375 & PX60M Tools (single shot)

Suits most brands of low velocity powder actuated tools:

Part No.	Description					
		mm	mm	mm	qty	qty
PXCC27	PX - Drive Pin 27mm with Angle Clip	8	27	3.7	100	800



PXCC25	25mm Drive Pin with Angle Clip	8	25	3.7	100	800
PXCC32	32mm Drive Pin with Angle Clip		32	3.7	100	800
PXCCT25	25mm Drive Pin washered - Angle Clip with Top Hat		25	3.7	100	800



PXCCSC - Angle Clip - Ballistic Point

Ballistic Point Drive Pin for Hard Concrete and Steel

For use with ICCONS® PX350, PX375 & PX60M Tools (single shot)

Suits most brands of low velocity powder actuated tools.

Part No.	Description					
		mm	mm	mm	qty	qty
PXCCSC25	PX - Drive Pin 25mm Ballistic with Angle Clip	8	25	3.7	100	800
PXCCSC32	PX - Drive Pin 32mm Ballistic with Angle Clip		32	3.7	100	800



PXTR - M10 Threaded Rod Hanger

For use with ICCONS® PX350, PX375 & PX60M Tools (single shot)

Suits most brands of low velocity powder actuated tools.



Part No.	Description	mm	mm	mm	qty	qty
PXTRM10	M10 Rod Hanger Assembly with 27mm Twist Shank Drive Pin	8	27	3.7	50	600



PXCON - Conduit Clip - Metal

For use with ICCONS® PX350, PX375 & PX60M Tools (single shot)

Suits most brands of low velocity powder actuated tools.



Part No.	Description	mm	mm	mm	mm	qty	qty
PXCON25	25mm Conduit Clip - Metal with 25mm Drive Pin	8	25	3.7	25	25	200



PXCT - Cable Tie Assembly

For use with ICCONS® PX350, PX375 & PX60M Tools (single shot)

Suits most brands of low velocity powder actuated tools.



Part No.	Description	mm	mm	mm	mm	qty	qty
PXCT240	240mm Cable Tie with 32mm Drive Pin	8	32	3.7	240	100	200



Angle Clip

No Pin

ZINC INTERNAL



Part No.	Description	qty	qty
PACCNP	Angle Clip - 8mm & 7mm holes - No Pin	100	800



Knurled Shank Masonry Nail

Zinc Clear

ZINC INTERNAL



Part No.	Description	mm	mm	qty	qty
KMN25	3.7 x 25mm	25	3.7	100	2000
KMN40	3.7 x 40mm	40	3.7	100	1000
KMN50	3.7 x 50mm	50	3.7	100	1000
KMN65	3.7 x 65mm	65	3.7	100	1000
KMN75	3.7 x 75mm	75	3.7	100	1000

* Also referenced on Page 62



Mickey Pins

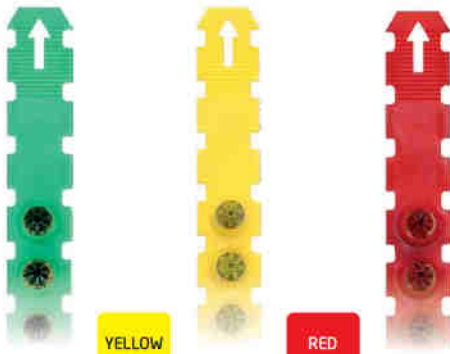
Zinc Clear

ZINC INTERNAL



Part No.	Description	mm	mm	qty	qty
MPW20	Washed Mickey Pin hand drive nail - 20 x 2.5mm	20	2.5	500	5000
MPW25	Washed Mickey Pin hand drive nail - 25 x 2.5mm	25	2.5	500	5000
MPW30	Washed Mickey Pin hand drive nail - 30 x 2.5mm	30	2.5	500	5000
MPW40	Washed Mickey Pin hand drive nail - 40 x 2.5mm	40	2.5	500	4000
MPW50	Washed Mickey Pin hand drive nail - 50 x 2.5mm	50	2.5	500	4000

* Also referenced on Page 62

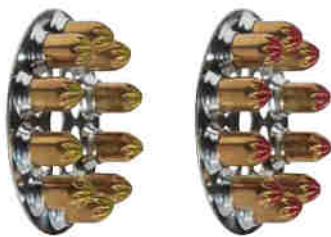


PXLS - Load Safety Strip - .27 Caliber

For use with ICCONS® PX350, PX375 & PX60M Tools
Suits most brands of low velocity powder actuated tools.



Part No.	Part No.	Part No.	Description	qty	qty
PXLSG (3LVS27)	PXLSY (4LVS27)	PXLSR (5LVS27)	.27 Caliber 10 load safety strip	100	1000



PXLD - Load Disk - .25 Caliber

For use with ICCONS® PX60M Tools & Powers® P3X



Part No.	Part No.	Description	qty	qty
PXLDY (4060)	PXLDR (5060)	.25 Caliber 10 load disk	100	1000



PSV - Load Single - .22 Caliber

For High Velocity Tools



Part No.	Part No.	Part No.	Description	qty	qty
PSVY (22LRSC4)	PSVY (22LRSC5)	PSVY (22LRSC6)	.22 High Velocity load - Single	100	1000