



Earthmoving





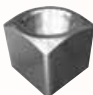

For all order enquiries
call 07 3801 8885

temsupplies.com.au






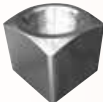



Index

Plow Bolt			2
Plow Hex Nut			3

TRACK - METRIC

Dome Hex Bolt			4
Hex Bolt			4
Square Nut			5
Square Nut with Collar			5

TRACK - UNF

Dome Hex Bolt			6
Hex Bolt			6
Hex Nut			6
Square Nut			7
Square Nut - Round Face			7
Square Nut - Stepped			7
Hex Nut - Round Face			7

Technical	Thread Table	8
-----------	--------------	---

Plow Bolt Grade 9

Plain / Black



UNC PLOW BOLT GRADE 9 HEC

Part	Alternate Part	OEM Part	Size (inch)	Length (inch)	Pack	Pack Wgt (Kg)
CBPG9PC0620150	821001	4F-3664	5/8	1 1/2	200	14.60
CBPG9PC0620175	821003	4F-3653	5/8	1 3/4	200	16.20
CBPG9PC0620200	821005	4F-3654	5/8	2	175	15.58
CBPG9PC0620225	821007	3F-5108	5/8	2 1/4	150	14.55
CBPG9PC0620250	821009	4F-3656	5/8	2 1/2	125	13.63
CBPG9PC0620275	821011	4F-3657	5/8	2 3/4	100	11.90
CBPG9PC0620300	821013	4F-3658	5/8	3	100	12.90
CBPG9PC0620350	821017	4F-3665	5/8	3 1/2	85	12.58
CBPG9PC0620400	821021	4F-3671	5/8	4	70	11.76
CBPG9PC0620450	821025	-	5/8	4 1/2	60	11.10
CBPG9PC0750200	821205	4F-3672	3/4	2	115	15.30
CBPG9PC0750225	821207	4F-7827	3/4	2 1/4	100	14.50
CBPG9PC0750250	821209	5J-4773	3/4	2 1/2	90	14.04
CBPG9PC0750275	821211	5J-4771	3/4	2 3/4	80	13.76
CBPG9PC0750300	821213	4F-0138	3/4	3	80	14.88
CBPG9PC0750325	821215	-	3/4	3 1/4	70	14.07
CBPG9PC0750350	821217	-	3/4	3 1/2	70	14.98
CBPG9PC0750375	821219	5F-8933	3/4	3 3/4	60	13.68
CBPG9PC0750400	821221	-	3/4	4	55	13.37
CBPG9PC0750450	821225	4F-0253	3/4	4 1/2	40	10.84
CBPG9PC0750500	821229	-	3/4	5	40	12.00
CBPG9PC0870225	821407	-	7/8	2 1/4	75	15.23
CBPG9PC0870250	821409	5J-4772	7/8	2 1/2	65	14.17
CBPG9PC0870275	821411	6F-0196	7/8	2 3/4	60	14.10
CBPG9PC0870300	821413	5J-2409	7/8	3	55	13.81
CBPG9PC0870325	821415	8J-2935	7/8	3 1/4	50	13.70
CBPG9PC0870350	821417	2J-2548	7/8	3 1/2	45	13.32
CBPG9PC0870400	821421	-	7/8	4	45	15.08
CBPG9PC0870425	821423	2J-5458	7/8	4 1/4	40	14.16
CBPG9PC0870500	821429	-	7/8	5	35	14.32
CBPG9PC1000275	821611	1J-5607	1	2 3/4	45	14.22
CBPG9PC1000300	821613	4F-4042	1	3	40	13.88
CBPG9PC1000325	821615	4J-9058	1	3 1/4	40	14.92
CBPG9PC1000350	821617	4J-9208	1	3 1/2	35	13.93
CBPG9PC1000375	821619	1J-4948	1	3 3/4	30	12.54
CBPG9PC1000400	821621	5P-8136	1	4	30	13.14
CBPG9PC1000450	821625	1J-3527	1	4 1/2	25	12.28
CBPG9PC1000500	821629	1J-2034	1	5	20	10.66
CBPG9PC1000550	-	-	1	5 1/2	20	11.70

Plow Bolt Grade 9

Plain / Black

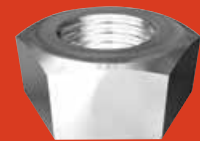
UNC PLOW BOLT GRADE 9 HEC

Part	Alternate Part	OEM Part	Size (inch)	Length (inch)	Pack	Pack Wgt (Kg)
CBPG9PC1250375	822019	6V-6535	1 1/4	3 3/4	15	10.59
CBPG9PC1250387	822020	-	1 1/4	3 7/8	15	10.80
CBPG9PC1250400	822021	-	1 1/4	4	15	11.10
CBPG9PC1250412	822022	5P-8823	1 1/4	4 1/8	15	11.30
CBPG9PC1250450	822025	6V-8360	1 1/4	4 1/2	15	12.09
CBPG9PC1250500	822029	5P-8361	1 1/4	5	15	13.05
CBPG9PC1250600	822037	-	1 1/4	6	15	15.12
CBPG9PC1370450	-	-	1 3/8	4 1/2	10	8.80
CBPG9PC1370550	-	-	1 3/8	5 1/2	10	10.80
CBPG9PC1370600	-	-	1 3/8	6	10	14.80

1-3/8 Bolts flat head.

UNC PLOW HEX NUT GRADE 8 HEC

Part	Alternate Part	OEM Part	Size (inch)	Pack	Pack Wgt (Kg)
CNPG8PC062	960410	4K-0367	5/8	400	12.80
CNPG8PC075	960412	2J-3506	3/4	250	13.00
CNPG8PC087	960414	2J-3505	7/8	150	12.30
CNPG8PC100	960416	2J-3507	1	100	12.10
CNPG8PC125	960420	3K-9770	1 1/4	50	11.90
CNPG8PC137	-	-	1 3/8	50	8.90



Track Bolt Grade 9

Plain / Black



METRIC FINE TRACK DOME HEX BOLT GRADE 9 HEC

Part	Alternate Part	OEM Part	Size	Length (mm)	Thread (mm)	Pack	Pack Wgt (Kg)
CBTG9DFM160046	911607	4I-7538	M16	46	26	100	13.80
CBTG9DFM160055	911609	096-1043	M16	55	30	100	15.80
CBTG9DFM180058	911809	093-0262	M18	58	27	75	13.12
CBTG9DFM200055	912014	9W-3619	M20	55	32	50	12.75
CBTG9DFM200063	912008	6Y-0846	M20	63	34	50	13.65
CBTG9DFM200070	-	093-0265	M20	70	38	50	11.50
CBTG9DFM220067	912200	6Y-9024	M22	67	38	25	7.87



METRIC FINE TRACK HEX BOLT GRADE 9 HEC

Part	Alternate Part	OEM Part	Size	Length (mm)	Thread (mm)	Pack	Pack Wgt (Kg)
CBTG9HFM140035	911407	136-2401	M14	35	22	100	8.90

Track Nut Grade 8

Plain / Black

METRIC FINE TRACK SQUARE NUT GRADE 8 HEC

Part	Alternate Part	OEM Part	Size	Height (mm)	Pack	Pack Wgt (Kg)
CNTG8QFM14	970114	136-2404	M14	14	100	3.30
CNTG8QFM16	970116	5I-6125	M16	16	100	5.10
CNTG8QFM18	970118	093-0320	M18	22	75	4.65
CNTG8QFM20	301922	9W-3361	M20	21	50	4.39
CNTG8QFM22	970121	9W-4381	M22	22	25	2.58



METRIC FINE TRACK SQUARE NUT WITH COLLAR GRADE 8 HEC

Part	Alternate Part	OEM Part	Size	Height (mm)	Pack	Pack Wgt (Kg)
CNTG8CFM20	970120	093-0321	M20	27	50	4.74



Track Bolt Grade 9

Plain / Black



UNF TRACK HEX BOLT - DOME HEAD GRADE 9 HEC

Part	Alternate Part	OEM Part	Size (inch)	TPI	Length (mm) (inch)		Thread (mm)	Pack	Pack Wgt (Kg)
CBTG9DF0500035	-	102-8072	1/2	20	35	1.38	20	100	6.15
CBTG9DF0500038	890801	3A-9605	1/2	20	38	1.50	22	100	6.30
CBTG9DF0560041	890902	4K-7038	9/16	18	41	1.63	30	100	9.10
CBTG9DF0620051	891006	7H-3597	5/8	18	51	2.01	28	100	13.40
CBTG9DF0620055	891046	9G-3110	5/8	18	55	2.17	33	100	13.80
CBTG9DF0750054	891206	1S-1859	3/4	16	54	2.16	31	50	10.70
CBTG9DF0750060	891210	6V-1792	3/4	16	61	2.40	31	50	11.45
CBTG9DF0750061	891208	7H-3598	3/4	16	61	2.41	30	50	11.35
CBTG9DF0870067	891410	7H-3599	7/8	14	67	2.66	34	25	7.70
CBTG9DF0870087	891435	6V-1723	7/8	14	87	3.43	48	25	9.50
CBTG9DF1000074	891612	2M-5657	1	14	74	2.94	39	20	8.76
CBTG9DF1000089	891631	6T-2638	1	14	89	3.54	43	20	10.66
CBTG9DF1120096	901137	7T-1000	1-1/8	12	96	3.78	49	20	14.60
CBTG9DF1370109	902413	6T-8853	1-3/8	12	109	4.30	65	10	12.30

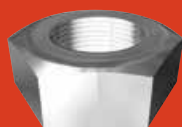
UNF TRACK HEX BOLT GRADE 9 HEC

Part	Alternate Part	OEM Part	Size (inch)	TPI	Length (mm) (inch)		Pack	Pack Wgt (Kg)
CBTG9HF0560051	890904	8S-4745	9/16	18	51	2.01	100	9.50



UNF TRACK HEX NUT GRADE 8 HEC

Part	Alternate Part	OEM Part	Size (inch)	TPI	Height (mm) (inch)		Pack	Pack Wgt (Kg)
CNTG8HF0501420	960308	8H-5724	1/2	20	14.2	0.56	100	2.70



Track Nut Grade 8

Plain / Black

UNF TRACK SQUARE NUT GRADE 8 HEC

Part	Alternate Part	OEM Part	Size (inch)	TPI	Height (mm) (inch)		Pack	Pack Wgt (Kg)
CNTG8QF0501500	950108	6S-3419	1/2	20	15.0	0.60	100	2.70
CNTG8QF056	950109	7K-2017	9/16	18	18.2	0.72	100	4.40
CNTG8QF062	950110	1M-1408	5/8	18	18.2	0.72	100	5.40
CNTG8QF075	950112	1S-1860	3/4	16	18.2	0.72	50	3.40
CNTG8QF087	950114	2S-2140	7/8	14	23.6	0.93	25	2.97
CNTG8QF100	950116	2V-0250	1	14	25.4	1.00	20	3.36

UNF TRACK SQUARE NUT - ROUND FACE GRADE 8 HEC

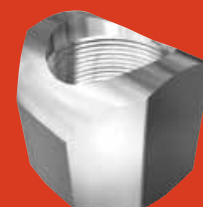
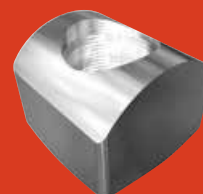
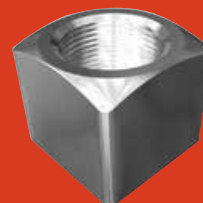
Part	Alternate Part	OEM Part	Size (inch)	TPI	Height (mm) (inch)		Pack	Pack Wgt (Kg)
CNTG8RF087	950120	7G-6442	7/8	14	35.0	1.38	25	3.85
CNTG8RF100	950121	7G-0434	1	14	39.8	1.57	20	4.70
CNTG8RF112	960418	5P-8221	1-1/8	12	43.6	1.72	20	9.00

UNF TRACK SQUARE NUT - STEPPED GRADE 8 HEC

Part	Alternate Part	OEM Part	Size (inch)	TPI	Height (mm) (inch)		Pack	Pack Wgt (Kg)
CNTG8SF087	950119	7T-9825	7/8	14	23.8	0.94	25	2.64

UNF TRACK HEX NUT - ROUND FACE GRADE 8 HEC

Part	Alternate Part	OEM Part	Size (inch)	TPI	Height (mm) (inch)		Pack	Pack Wgt (Kg)
CNTG8EF137	950127	3T-6292	1-3/8	12	45.9	1.81	10	4.5



Technical

Thread Table

			PITCH (MM)			THREADS PER INCH				
	Size		Coarse	Fine	Extra Fine	UNC	UN8	UNF	BSW	BSF
M1.6	-	#0	0.35	-	-	-	-	80	-	-
M2	-	#1	0.4	-	-	-	-	72	-	-
-	-	#2	-	-	-	56	-	64	-	-
M2.5	-	#3	0.45	-	-	48	-	56	-	-
-	-	#4	-	-	-	40	-	48	-	-
M3	1/8	#5	0.5	-	-	40	-	44	40	-
M3.5	-	#6	0.6	-	-	32	-	40	-	-
M4	-	#8	0.7	-	-	32	-	36	-	-
M5	3/16	#10	0.8	-	-	24	-	32	24	32
-	-	#12	-	-	-	24	-	28	-	-
M6	1/4	-	1	-	-	20	-	28	20	26
M8	5/16	-	1.25	1	-	18	-	24	18	22
M10	3/8	-	1.5	1.25	1	16	-	24	16	20
-	7/16	-	-	-	-	14	-	20	14	18
M12	1/2	-	1.75	1.5	1.25	13	-	20	12	16
M14	9/16	-	2	1.5	-	12	-	18	12	16
M16	5/8	-	2	1.5	-	11	-	18	11	14
M18	-	-	2.5	1.5	-	-	-	-	-	-
M20	3/4	-	2.5	1.5	-	10	-	16	10	12
M22	7/8	-	2.5	1.5	-	9	-	14	9	11
M24	1	-	3	2	-	8	8	12 (14)	8	10
M27	1 1/8	-	3	2	-	7	8	12	7	9
M30	1 1/4	-	3.5	2	-	7	8	12	7	9
M33	1 3/8	-	3.5	2	-	6	8	12	6	8
M36	1 1/2	-	4	3	-	6	8	12	6	8
M39	1 5/8	-	4	3	-	-	8	-	5	8
M42	-	-	4.5	-	-	-	-	-	-	-
M45	1 3/4	-	4.5	-	-	5	8	-	5	7
M48	1 7/8	-	5	-	-	-	8	-	-	-
M52	2	-	5	-	-	4.5	8	-	4.5	7
M56	2 1/4	-	5.5	-	-	4.5	8	-	4	6
M60	-	-	5.5	-	-	-	-	-	-	-
M64	2 1/2	-	6	-	-	4	8	-	4	6
M72	2 3/4	-	6	-	-	4	8	-	3.5	6
M80	3	-	6	-	-	4	8	-	3.5	5
-	3 1/4	-	-	-	-	4	8	-	3.25	5
M90	3 1/2	-	6	-	-	4	8	-	3.25	4.5
-	3 3/4	-	-	-	-	4	8	-	3	4.5
M100	4	-	6	-	-	4	8	-	3	4.5